

Lease # 11063 = 128.6905 acres  
Vol 176 Pg 425 = 31.3095 acres

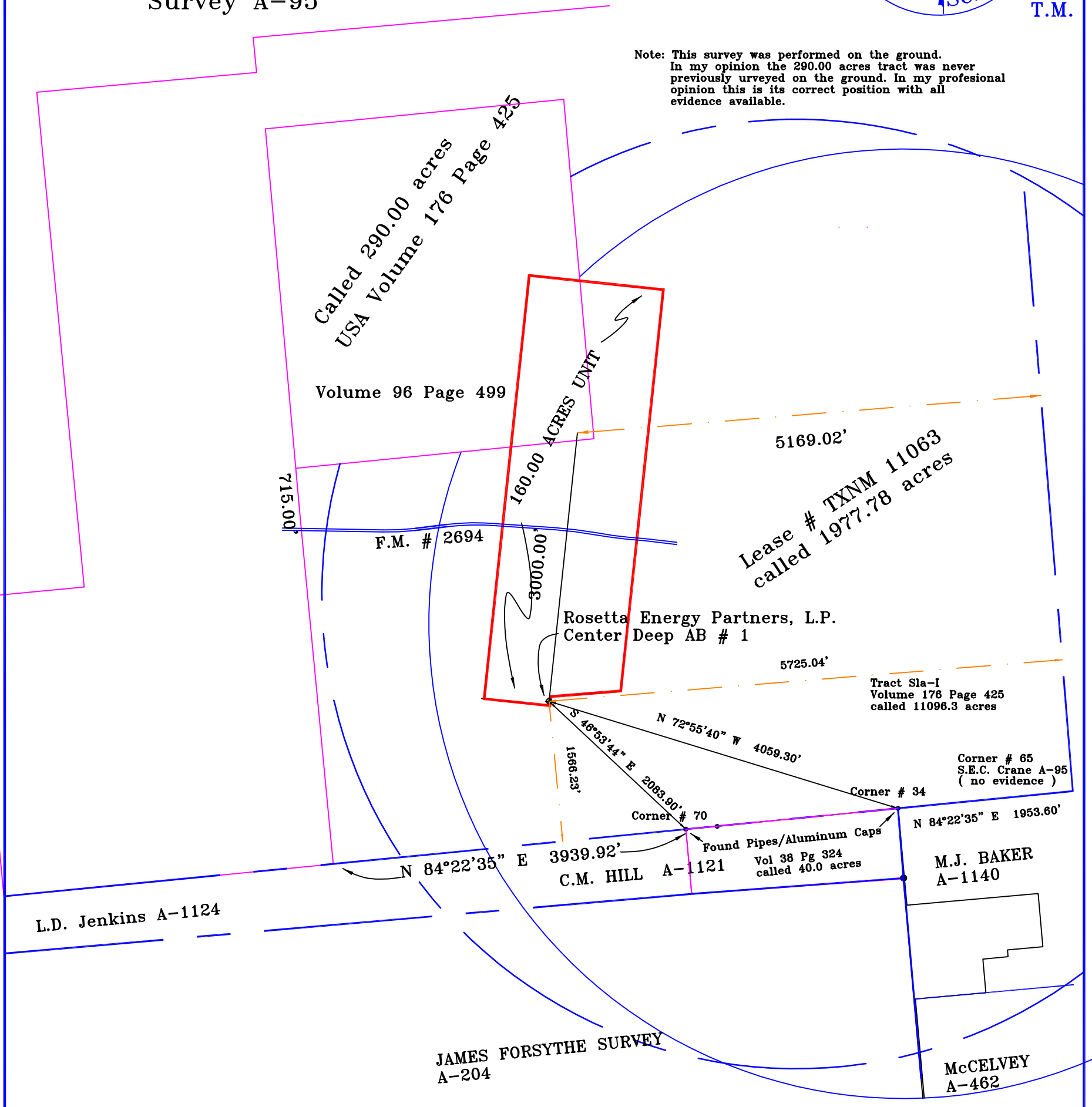
Unit Revised solely to correct acreage in  
lease # 11063

William J. Crane  
Survey A-95



T.M.

Note: This survey was performed on the ground.  
In my opinion the 290.00 acres tract was never  
previously surveyed on the ground. In my professional  
opinion this is its correct position with all  
evidence available.



**PROPOSED UNIT ( Revised )  
ROSETTA ENERGY PARTNERS, L.P.  
CENTER DEEP UNIT AB # 1  
SHELBY COUNTY, TEXAS  
SURVEYED NOVEMBER, 2004  
SCALE 1" = 1500.00'**

I, RUBEN GREGG SAXON, REGISTERED PROFESSIONAL LAND SURVEYOR NO. 5669

do hereby certify to Rosetta Energy Partners, L.P. that the plat shown hereon was prepared  
from an actual survey made on the ground under my direction and supervision  
during the month of November 2004. Any Conflicts, Protrusions, and Encroachments  
are as shown.

GIVEN UNDER MY HAND AND SEAL, this the \_\_\_\_\_ day of March, 2005.

REGISTERED PROFESSIONAL LAND SURVEYOR NO. 5669

Bearing Source: Texas Coordinate System ( Central )

Saxon Surveying, Inc.  
201 West Broad  
Mineola, Texas 75773  
903-569-1776  
www.saxonsurveying.com