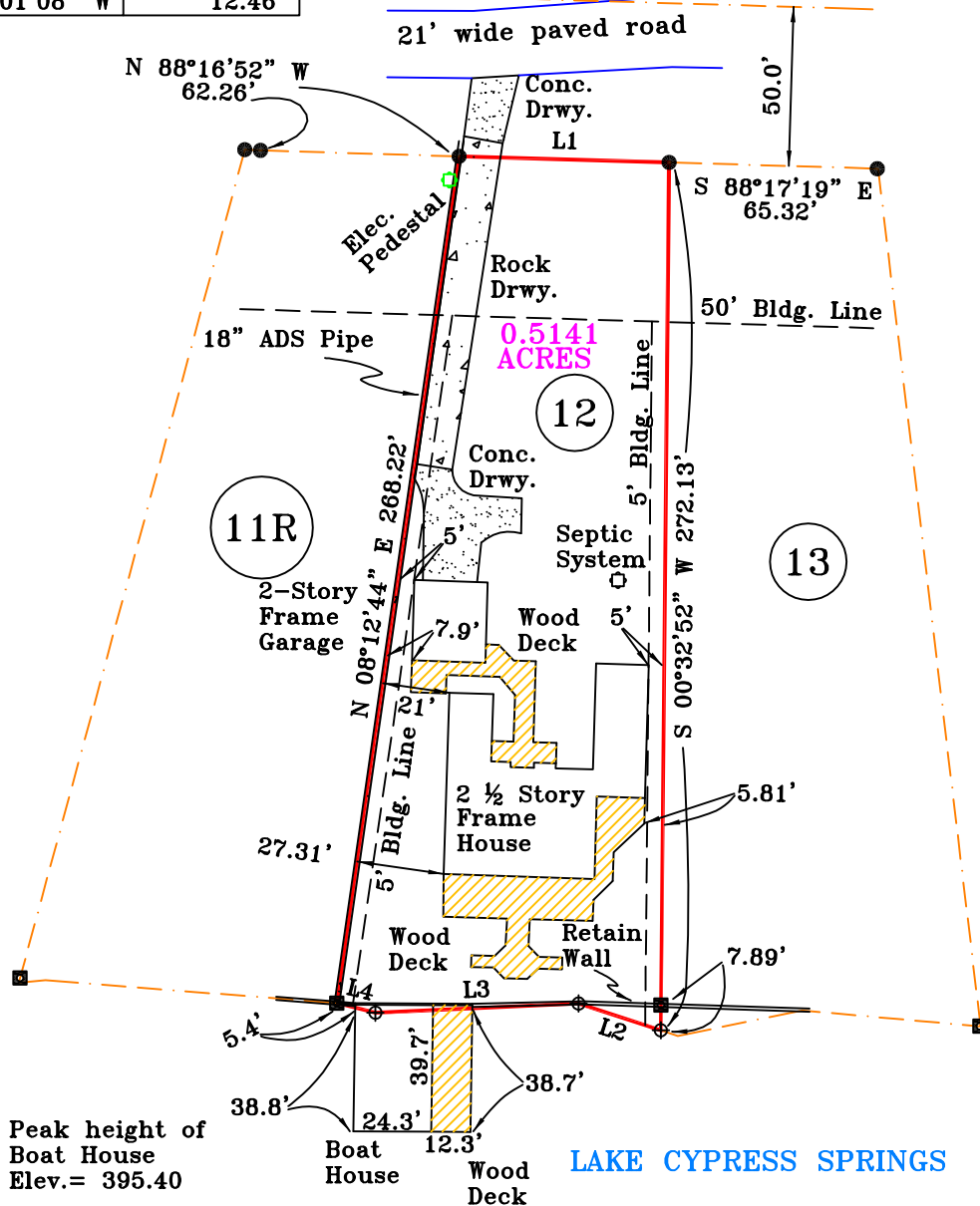


LINE	BEARING	DISTANCE
L1	N 88°21'18" W	65.85'
L2	N 71°58'27" W	27.06'
L3	S 87°26'12" W	63.77'
L4	N 76°01'08" W	12.46'

0804039



T.M.



Peak height of Boat House Elev.= 395.40

LAKE CYPRESS SPRINGS

**AS BUILT PLAT SHOWING LOT 12,
MARINA POINT SUBDIVISION
SLIDE 92 A, PLAT CABINET,
FRANKLIN COUNTY, TEXAS
SURVEYED APRIL, 2008
SCALE 1 INCH = 60.00 FEET**

I, RUBEN GREGG SAXON, REGISTERED PROFESSIONAL LAND SURVEYOR NO. 5669, do hereby certify to Tommy Grimes that the plat shown hereon was prepared from an actual survey made on the ground under my direction and supervision during the month of April, 2008.

GIVEN UNDER MY HAND AND SEAL, this the 24th day of April, 2008.

REGISTERED PROFESSIONAL LAND SURVEYOR NO. 5669

Bearing Source: (W.B.L. LOT 12)



Surveyor's Note:

- E — E — E — Overhead Power Line
- X — X — X — Barbed Wire Fence
- O — O — O — Chain link Fence
- □ — □ — □ — Wood Privacy Fence
- P — P — P — Pipeline
- T — T — T — Telephone

Date	Revision

www.saxonsurveying.com

- ◆ = Railroad Spike Fnd.
- ◇ = Railroad Spike Set
- ⊕ = point for corner
- = 1/2" Iron Rod Fnd.
- ▲ = 1/2" Iron Pipe Fnd.
- ⊙ = 3/8" Iron Rod Fnd.
- ⊠ = 1" Iron Pipe Fnd.
- = Con. Mrkr. Fnd.
- = 1/2" Iron Rod Set
- ⊙ = utility pole
- ⊗ = "X" cut
- ⊠ = 5/8" Iron Pipe Fnd.
- ⊕ = 60D Nail Fnd.
- ⊠ = 60D Nail Set

Drawn by: G.E.M.
Field Work by: J.W./J.J
Book/Page: 76/44

Saxon Surveying, Inc.
201 West Broad St.
Mineola, TX 75773
903-569-1776

email: gary@saxonsurveying.com